

IMPERIAL UNITS (INCHES)										MOTOR SPECIFICATIONS				
UNIT SIZE	PRIMARY AIR	RETURN AIR INLET		OUTLET			L	W	H	ECM MOTOR	FULL LOAD AMPS			
	INLET "A"	B	C	D	E	G				MOTOR H.P	115V	208V	240V	277V
10	4,5,6,7	14	6 7/8	11 1/2	6	3	48	32	8 5/8	1/3	4.9	3.6	3.1	2.9
20	6,8,10	14	9 1/2	12 3/4	7	7	41	26	11	1/3	4.5	2.9	2.6	2.4
30	6,8,10	14	9 1/2	12 3/4	7	7	41	26	11	1/2	7.3	5.1	4.3	4.0
SI UNITS (mm)														
UNIT SIZE	PRIMARY AIR	RETURN AIR INLET		OUTLET			L	W	H	PSC MOTOR	FULL LOAD AMPS			
	INLET "A"	B	C	D	E	G				MOTOR H.P	115V	208V	240V	277V
10	102,127,152,178	356	175	292	152	76	1219	813	219	NOT AVAILABLE				
20	152,203,254	356	241	324	178	178	1041	660	279	1/5	3.9	1.5	1.5	1.4
30	152,203,254	356	241	324	178	178	1041	660	279	1/4	4.2	1.6	1.7	1.6

STANDARD CONSTRUCTION:

- 20 GA. CONSTRUCTION.
- LEAK RESISTANT CASING.
- INTERNAL INSULATION - FIBERGLASS 1/2"(13) THICK, MINIMUM 1.5# DENSITY WHICH MEETS REQUIREMENTS OF NFPA 90A & UL181.
- UNITS NOT TO BE USED FOR TEMPORARY HEAT OR VENTILATION DURING CONSTRUCTION.
- UNITS MUST HAVE MINIMUM 0.1" w.g. (25 PA) EXTERNAL STATIC PRESSURE TO OPERATE.
- REFER TO SUBMITTED BOX SCHEDULE FOR AIR VOLUMES & INLET SIZES.
- ECM ELECTRICAL MOTOR, 1 PHASE, 60 CYCLE, SPEED CONTROLLER INCLUDED.
- LISTED UL 1995 & CSA236 ASSEMBLY.
- LEFT HAND CONFIGURATION SHOWN ABOVE.

OPTIONS:

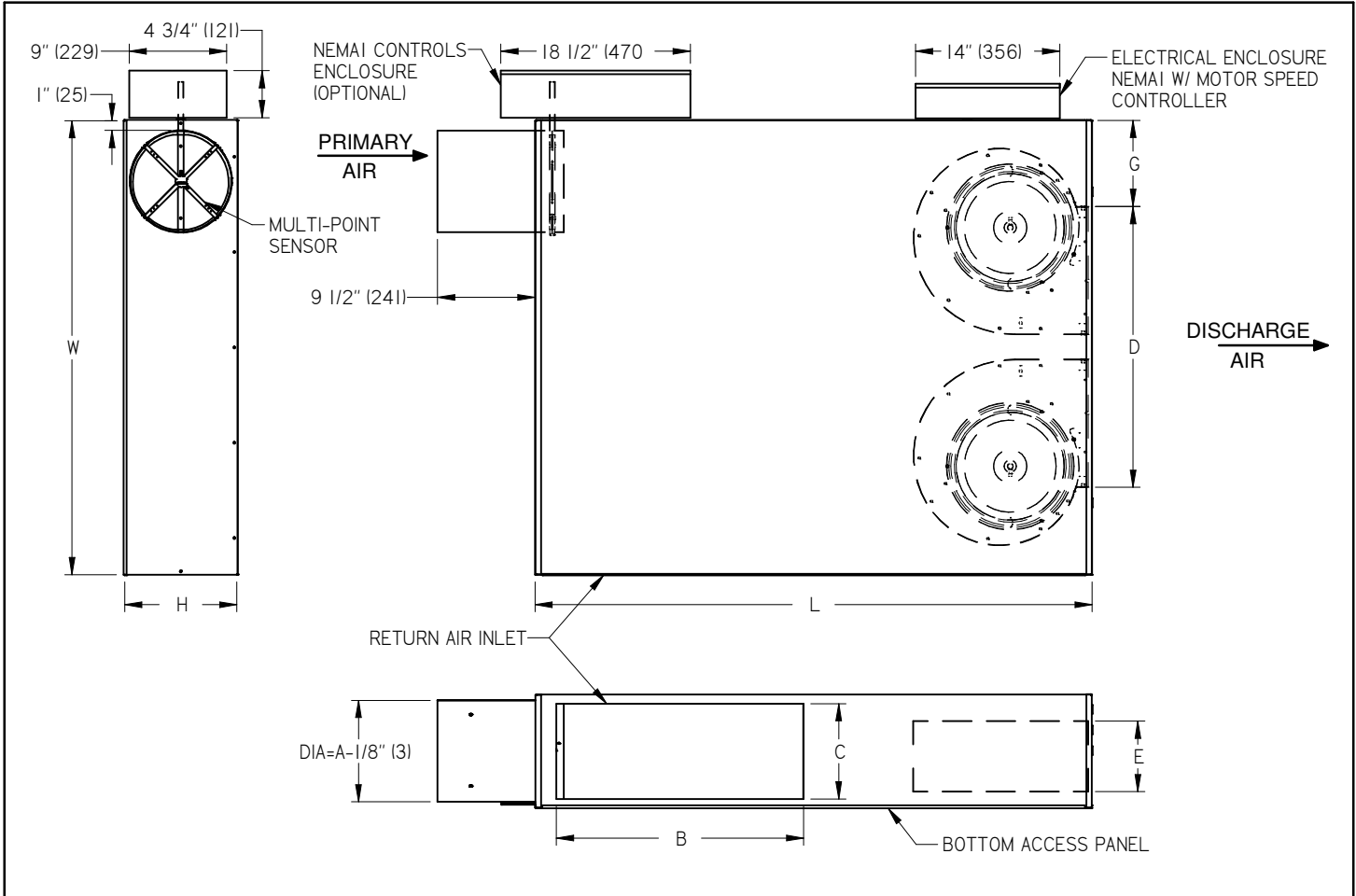
- PSC MOTOR
- HANGER BRACKETS
- SPRING HANGER BRACKETS
- DISCONNECT SWITCH
- GAUGE TAPS
- CONTROLS ENCLOSURE
- 1" MERV 3 FILTER

OPTIONAL LINERS:

- 1/2" FIBERFREE (FF50)
- 5/8" FOIL FACED FIBERBOARD (FB)

ALL METRIC DIMENSIONS () ARE SOFT CONVERTED. IMPERIAL DIMENSIONS ARE CONVERTED TO METRIC AND ROUNDED TO THE NEAREST MILLIMETER.

PROJECT:		PRICE	
ENGINEER:			
CUSTOMER:		G	FDCLP2 LOW PROFILE FAN POWERED TERMINAL CONSTANT VOLUME SIZES 10,20,30
SUBMITTAL DATE:		266716	
SPEC. SYMBOL:		03/06/2023	



IMPERIAL UNITS (INCHES)										MOTOR SPECIFICATIONS				
UNIT SIZE	PRIMARY AIR	RETURN AIR INLET		OUTLET			L	W	H	ECM MOTOR	FULL LOAD AMPS			
	INLET "A"	B	C	D	E	G				MOTOR H.P	115V	208V	240V	277V
50	10	24	9 1/4	28 1/4	7	8 1/4	54	44	11	2 x 1/3	8.4	5.4	4.7	4.3
SI UNITS (mm)														
UNIT SIZE	PRIMARY AIR	RETURN AIR INLET		OUTLET			L	W	H	PSC MOTOR	FULL LOAD AMPS			
	INLET "A"	B	C	D	E	G				MOTOR H.P	115V	208V	240V	277V
50	254	610	235	718	178	210	1372	1118	279	2 x 1/5	8.8	3.2	3.3	3.1

STANDARD CONSTRUCTION:

- 20 GA. CONSTRUCTION.
- LEAK RESISTANT CASING.
- INTERNAL INSULATION - FIBERGLASS 1/2"(13) THICK, MINIMUM 1.5# DENSITY WHICH MEETS REQUIREMENTS OF NFPA 90A & UL181.
- UNITS NOT TO BE USED FOR TEMPORARY HEAT OR VENTILATION DURING CONSTRUCTION.
- UNITS MUST HAVE MINIMUM 0.1" w.g. (25 PA) EXTERNAL STATIC PRESSURE TO OPERATE.
- REFER TO SUBMITTED BOX SCHEDULE FOR AIR VOLUMES & INLET SIZES.
- ECM ELECTRICAL MOTOR, 1 PHASE, 60 CYCLE, SPEED CONTROLLER INCLUDED.
- LISTED UL 1995 & CSA236 ASSEMBLY.
- LEFT HAND CONFIGURATION SHOWN ABOVE.

OPTIONS:

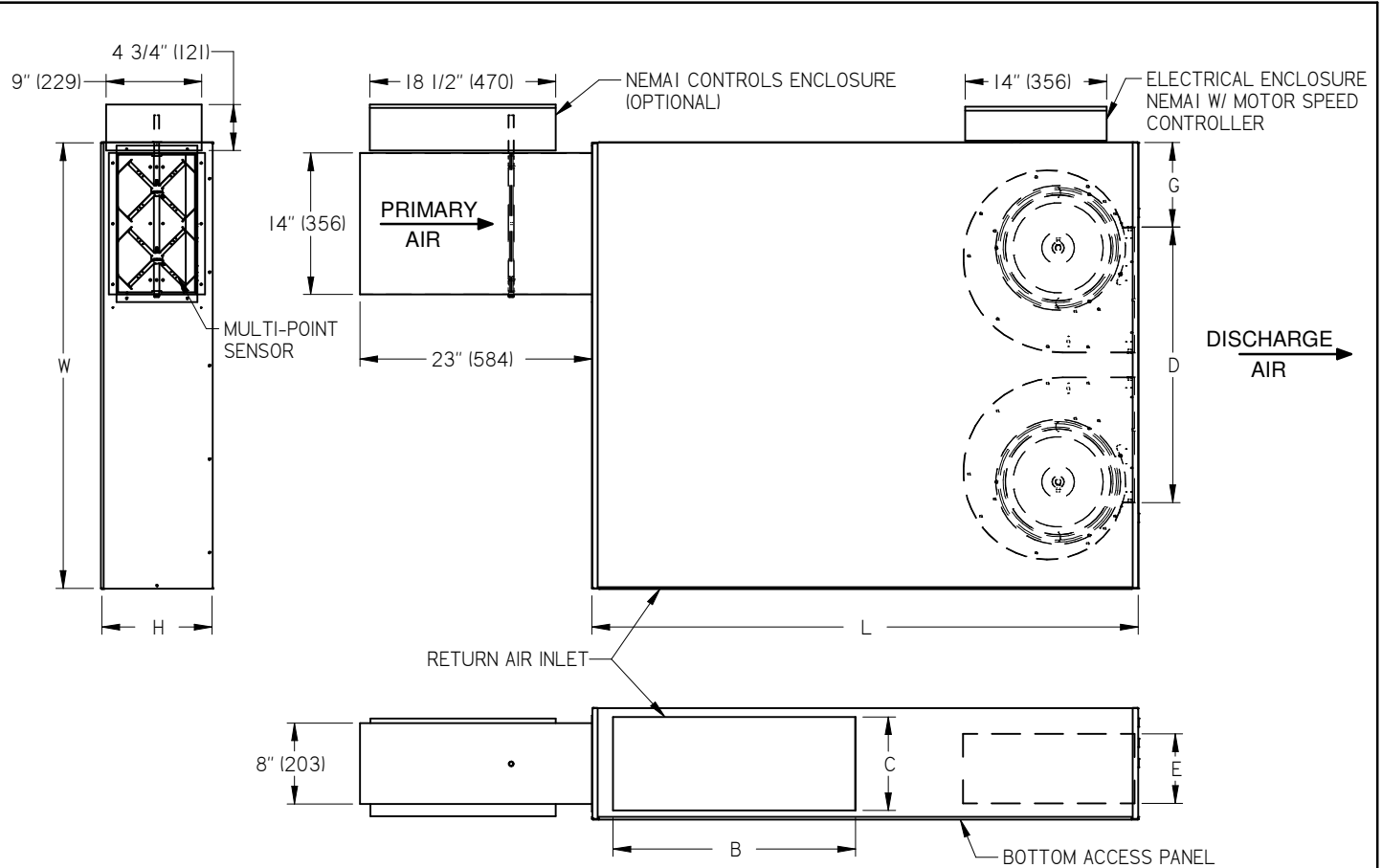
- PSC MOTOR
- HANGER BRACKETS
- SPRING HANGER BRACKETS
- DISCONNECT SWITCH
- GAUGE TAPS
- CONTROLS ENCLOSURE
- 1" MERV 3 FILTER

OPTIONAL LINERS:

- 1/2" FIBERFREE (FF50)
- 5/8" FOIL FACED FIBERBOARD (FB)

ALL METRIC DIMENSIONS () ARE SOFT CONVERTED. IMPERIAL DIMENSIONS ARE CONVERTED TO METRIC AND ROUNDED TO THE NEAREST MILLIMETER.

PROJECT:		PRICE	
ENGINEER:			
CUSTOMER:		G	FDCLP2 LOW PROFILE FAN POWERED TERMINAL CONSTANT VOLUME SIZE 50
SUBMITTAL DATE:		266716	
SPEC. SYMBOL:		03/06/2023	



IMPERIAL UNITS (INCHES)										MOTOR SPECIFICATIONS				
UNIT SIZE	PRIMARY AIR	RETURN AIR INLET		OUTLET			L	W	H	ECM MOTOR	FULL LOAD AMPS			
	INLET "A"	B	C	D	E	G				MOTOR H.P	115V	208V	240V	277V
50	14x8	24	9 1/4	28 1/4	7	8 1/4	54	44	11	2 x 1/3	8.4	5.4	4.7	4.3

SI UNITS (mm)										MOTOR SPECIFICATIONS				
UNIT SIZE	PRIMARY AIR	RETURN AIR INLET		OUTLET			L	W	H	PSC MOTOR	FULL LOAD AMPS			
	INLET "A"	B	C	D	E	G				MOTOR H.P	115V	208V	240V	277V
50	356X203	610	235	718	178	210	1372	1118	279	2 x 1/5	8.8	3.2	3.3	3.1

STANDARD CONSTRUCTION:

- 20 GA. CONSTRUCTION.
- LEAK RESISTANT CASING.
- INTERNAL INSULATION - FIBERGLASS 1/2"(13) THICK, MINIMUM 1.5# DENSITY WHICH MEETS REQUIREMENTS OF NFPA 90A & UL181.
- UNITS NOT TO BE USED FOR TEMPORARY HEAT OR VENTILATION DURING CONSTRUCTION.
- UNITS MUST HAVE MINIMUM 0.1" w.g. (25 PA) EXTERNAL STATIC PRESSURE TO OPERATE.
- REFER TO SUBMITTED BOX SCHEDULE FOR AIR VOLUMES & INLET SIZES.
- ECM ELECTRICAL MOTOR, 1 PHASE, 60 CYCLE, SPEED CONTROLLER INCLUDED.
- LISTED UL 1995 & CSA236 ASSEMBLY.
- LEFT HAND CONFIGURATION SHOWN ABOVE.

OPTIONS:

- PSC MOTOR
- HANGER BRACKETS
- SPRING HANGER BRACKETS
- DISCONNECT SWITCH
- GAUGE TAPS
- CONTROLS ENCLOSURE
- 1" MERV 3 FILTER

OPTIONAL LINERS:

- 1/2" FIBERFREE (FF50)
- 5/8" FOIL FACED FIBERBOARD (FB)

ALL METRIC DIMENSIONS () ARE SOFT CONVERTED. IMPERIAL DIMENSIONS ARE CONVERTED TO METRIC AND ROUNDED TO THE NEAREST MILLIMETER.

PROJECT:			FDCLP2
ENGINEER:			
CUSTOMER:		266716	FAN POWERED TERMINAL
SUBMITTAL DATE:		03/06/2023	CONSTANT VOLUME
SPEC. SYMBOL:			SIZE 50/14x8